

**Slow Exposures
Entry Application ~ 2009~ Student Division**

One entry form for each photograph

Each student may enter a maximum of four [4] photographs. Each photo must be accompanied by a separate entry form.

“The Wonderful World of Color”

- Category _____ **I. RED!**
_____ **II. YELLOW!**
_____ **III. BLUE!**
_____ **IV. Rainbow! [Any other color]**

Location where the photo was taken in Pike County:

Name your Photo! _____

By entering this contest I agree to follow the official and updated published rules. Failure to do so will result in disqualification.

Name [Please print] _____

Address _____

Phone Number _____

Age _____

Grade Level _____ Teacher/Homeroom _____

This Release Form must accompany any photo containing recognizable people. Every recognizable person in the photograph MUST sign this permission slip in order for the photograph to be accepted for judging. {If recognizable person is under 18 years of age, parent or legal guardian must sign for the minor. }

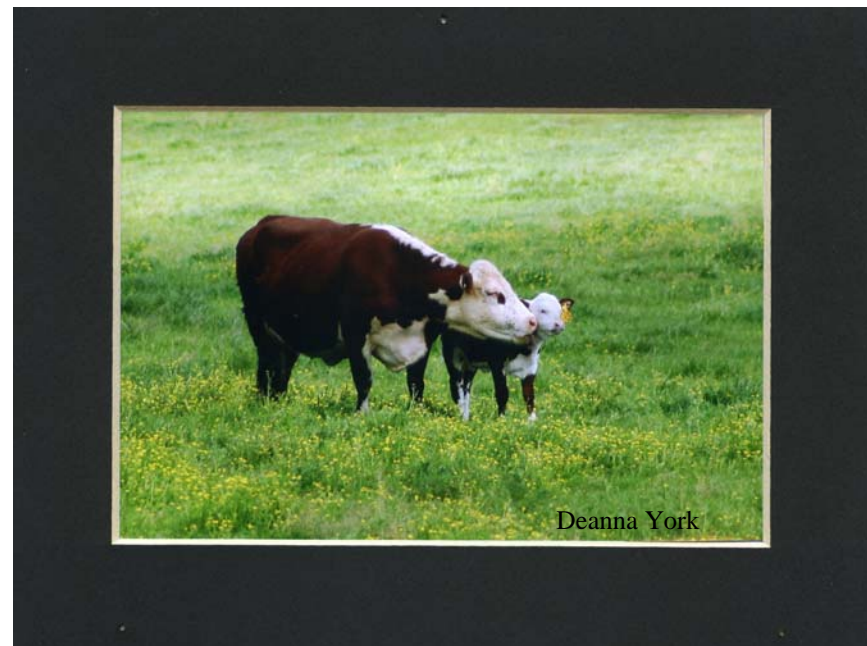
I understand that a Pike County Youth has taken a photograph of me and I give my permission for this photo to be displayed as a part of the **SLOW EXPOSURES** Pike County Student Photography Contest. If more signatures are needed please attach a sheet.

Name _____

Name _____

Name _____

Attach additional sheet as necessary to obtain all signatures.



SLOW EXPOSURES

**Student Photography
Contest 2009**

**“The Wonderful World
Of Color”**

**Entry dates for 2009:
August 1st thru September 4th, 2009**

Cash Prizes!!!

2009 Theme

“The Wonderful World Of Color”

Entry dates for 2009

August 1st thru September 4th, 2009

There are four entry categories:

I. RED!

II. YELLOW!

III. BLUE!

IV. RAINBOW! {Any of the other colors of the rainbow that you would like! }

Name your Photographs! By naming your photograph you are automatically entered in a contest for “Best Interpretive Title”. You are not required to name your photograph, but you might win a Special ribbon, so be creative!

Awards: First, Second, and Third Place winners will be selected in each category. One Grand Champion will be selected from the first place winners in the four categories. Honorable mention photographs will be recognized. Cash Prizes and trophies will be awarded at the respective Awards Day Ceremonies in May 2010.

\$CASH\$ Prizes!

Grand Champion ~ \$100 Chosen from the four First Place Winners
\$50 for each of the remaining First Place Winners
\$20 for each of the four Second Place Winners
\$10 for each of the four Third Place Winners

All photographs will be on exhibit in conjunction with the Adult Division of **SLOWEXPOSURES**, an official venue of

ATLANTA CELEBRATES PHOTOGRAPHY

During the spring of 2010, student photos will be displayed in the Media Centers at Pike County Schools plus any Private Schools participating, [for two week at each school]. Photos may also be displayed at various venues around Pike County such as the Library, Courthouse, Banks, etc. for promotional purposes. Photos will be returned before the end of the academic school year.

Direct questions to Anna Evans 770-229-1210

Slowexposures

2007 Student Photography Contest Entry Rules

Officially Updated on March 1, 2009

- All student contestants must be current residents of Pike County, enrolled in an active educational program such as Pike Public Schools, Home school or Private School. The children of Pike County teachers may enter the contest, regardless of their residential status so long as that child is enrolled in a Pike County School.
- All photographs must be taken within Pike County. The location where the photo was taken, ex. ‘New Hope Road’, or ‘Crawford Farm’ must be included on the entry form. **Photographs taken outside of Pike county will not be eligible for prizes.**
- All work must be done by the student.
- Photograph size is 4 inches x 6 inches. **ONLY.** No other sizes eligible for prizes.
- No entry fee for student contest.
- A limit of Four [4] photos **TOTAL** per contestant may be submitted. One completed entry form per photo. Entry Forms are available from: The Media Centers at all Pike County Schools, or on the web at www.slowexposures.org and click on “**Student Contest**”
- Entries are to be submitted to any Pike County School Media Center or to the Office of The Pike County Farm Bureau, Hwy 18 South. Zebulon, GA First eligible date to enter is **August 1, 2009.** Last eligible date for entry is **September 4, 2009.**
- Selected photographs will be used at the discretion of *Slowexposures* for promotional purposes, funding future *Slowexposures* exhibits, historic display or historic documentation at the discretion of the committee.
- **No** photographs will be accepted for judging which have been entered in previous **SLOWEXPOSURES** exhibits.
- The decisions of the Judges are final.
- Only winning photographs will be notified.
- All photographs will be retained by **SLOWEXPOSURES** until the completion of all exhibits No early returns will be made, please make additional copies for your use if needed.
- **SLOWEXPOSURES** or its representatives, can not be held responsible for damage to individual photos.
- By entering this contest the contestant agrees to all rules, failure to do so will result in disqualification . Students may enter both the Student and the Adult Exhibit but may not enter the same photographs in each. [There is no age limit for entering the Adult Division of Slow Exposures. See Adult rules of entry at www.slowexposures.org.]

Display dates for The 2009 Slowexposures Student Show at The Peach State Airport, Williamson, GA are: Sept. 18-20 and 25-27. Also, during the Concord Jubilee Oct. 16-18 Don’t miss it!